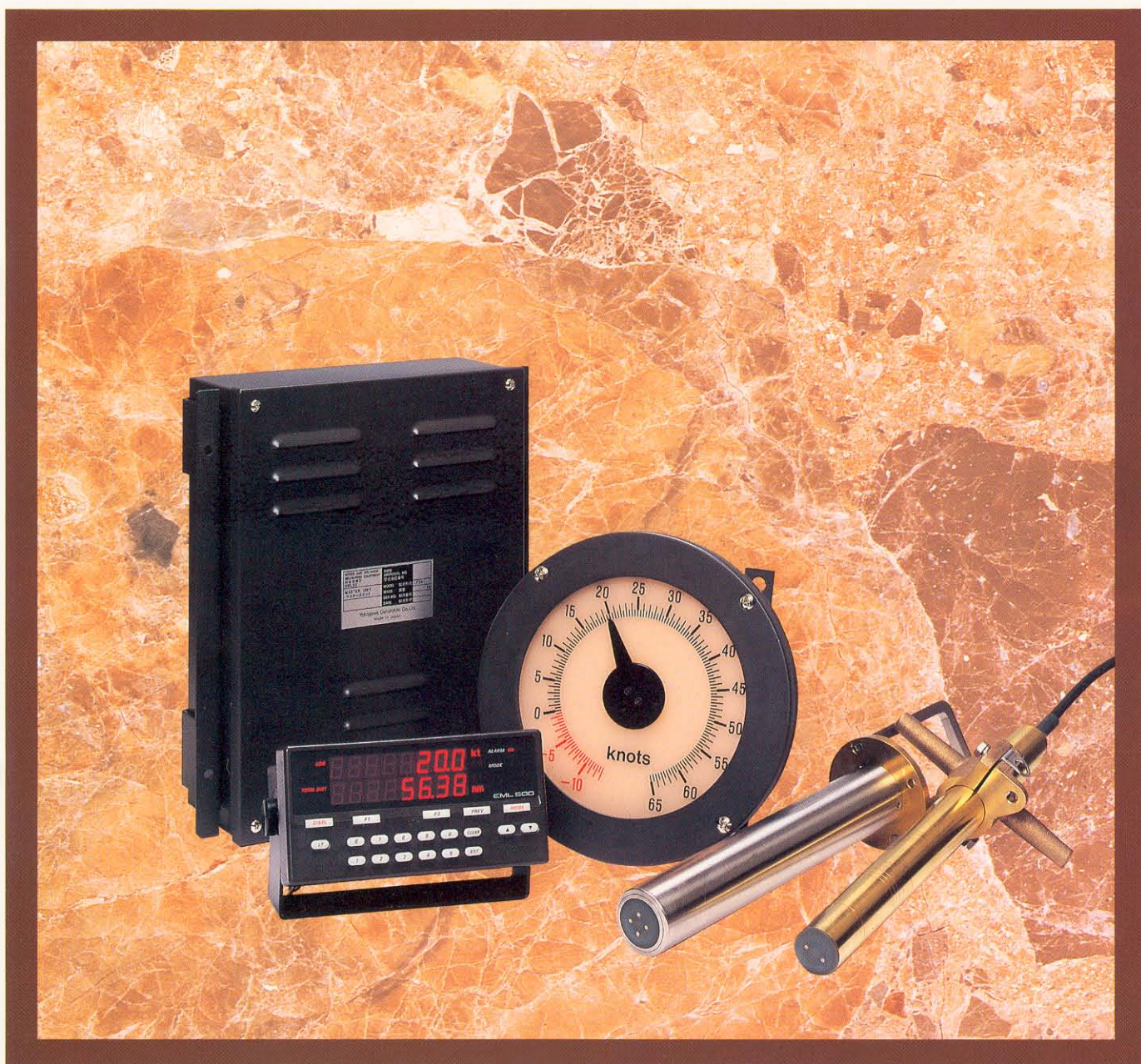


YOKOGAWA 

ELECTROMAGNETIC LOG

EML500 Series



SAFE NAVIGATION

Yokogawa Denshikiki Co., Ltd.

Bulletin 80B80T04E
3rd Edition

EML500 series, electromagnetic log With

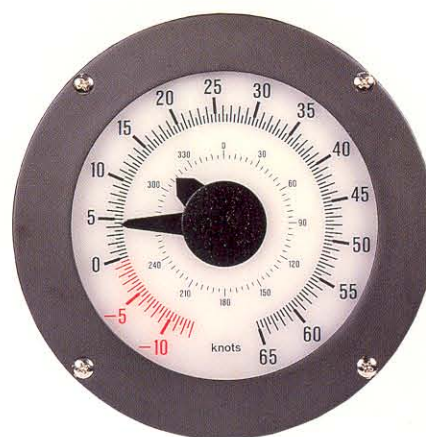
The EML500 series of electromagnetic logs is the most recent release from Yokogawa Denshikiki Co., Ltd., adding to the more than 8,000 widely-acclaimed electromagnetic logs manufactured by the company since 1962. The EML500 series, both user-friendly and packed with the latest technology, is ideal for a wide range of vessels, from large ships through to small vessels, and high-speed ships.



Master indicator

Dual-axis sensor

A dual-axis sensor (option) measures not only the longitudinal speed, but also the transverse speed.



dual-axis flash-mountable sensor

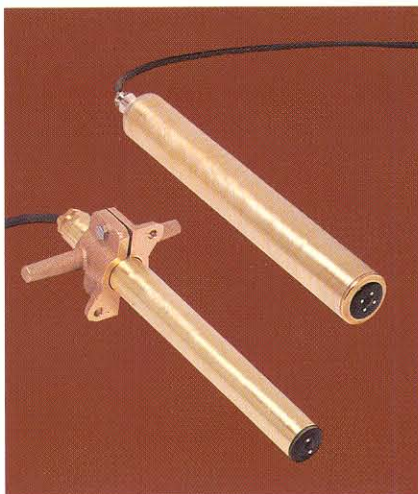
Flash-mountable sensor

The sensor, just 48 or 70 mm in diameter, can be flash-mounted below the bottom plate of the vessel, thus making the EML500 series suitable even for high-speed vessels.



Preamplifier built into the log sensor

The preamplifier built into the sensor outputs the current signal and enables less noisy speed signals to be transmitted over long distances, thus eliminating restrictions on the distance between the sensor and the master unit.



Back up by GPS

The EML500 can receive for back up signals (NMEA-0183) from external speed sensors such as the global positioning system (GPS).

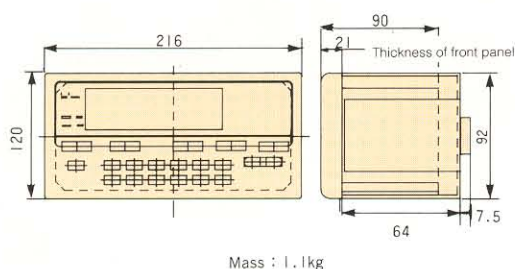
Versatile external outputs

The following outputs are available as standard specifications:

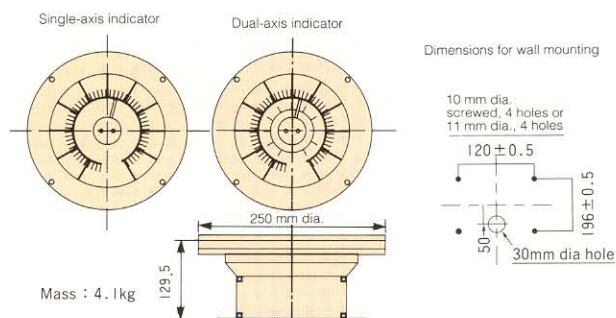
Pulse output	200 P/nm	10 circuits
Analog output	4 to 20 mA	4 circuits
	0 to 5 V	2 circuits
Digital output	NMEA-0183	2 circuits
Alarm output	Contact	2 circuits

Outline Dimensions

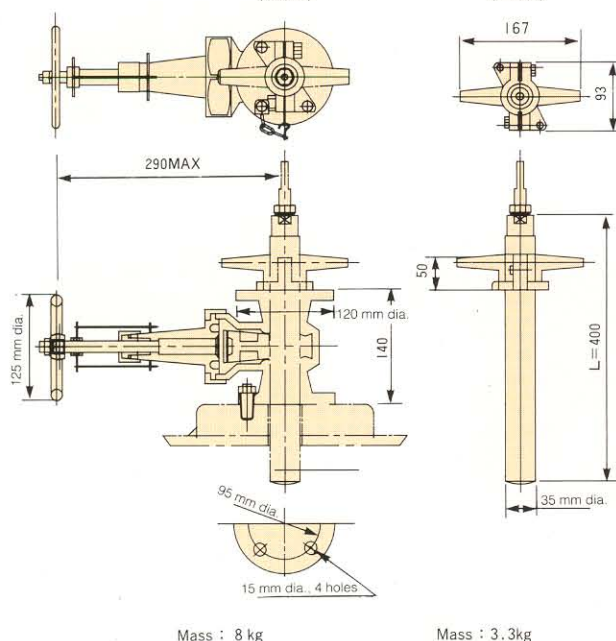
Master indicator LR523 (flash-mounted type)



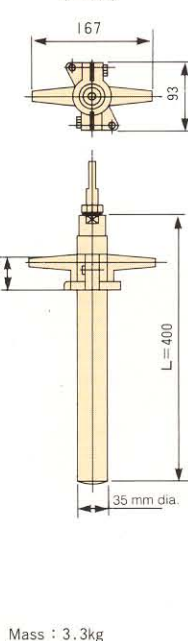
Speed indicator (wall-mounted type)



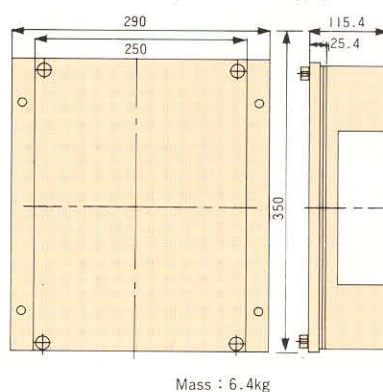
Valve/sensor (single-axis)
(LV033)



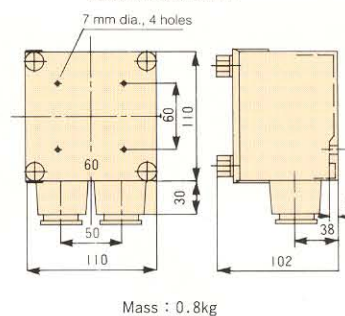
(LS531)



Master unit LT501 (flash-mounted type)



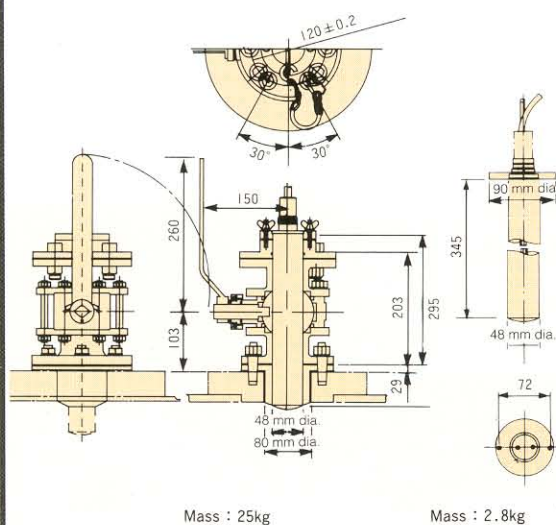
Junction box LN052



Dual-axis (single-axis)

Valve (LV052)

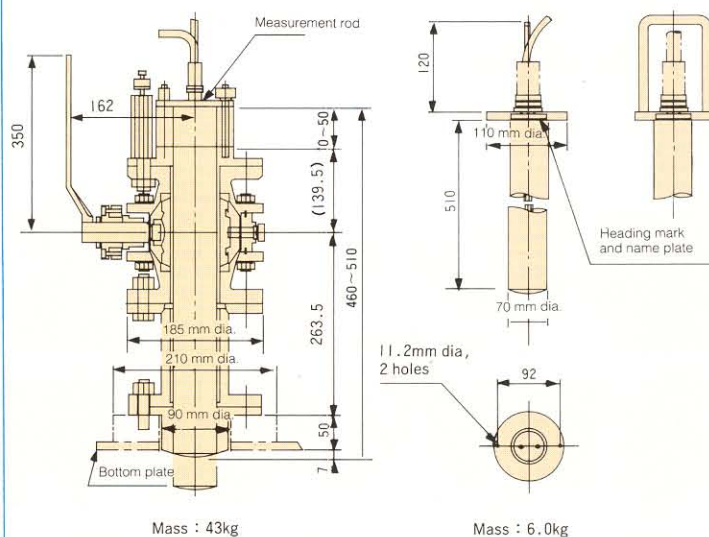
Sensor (LS542)



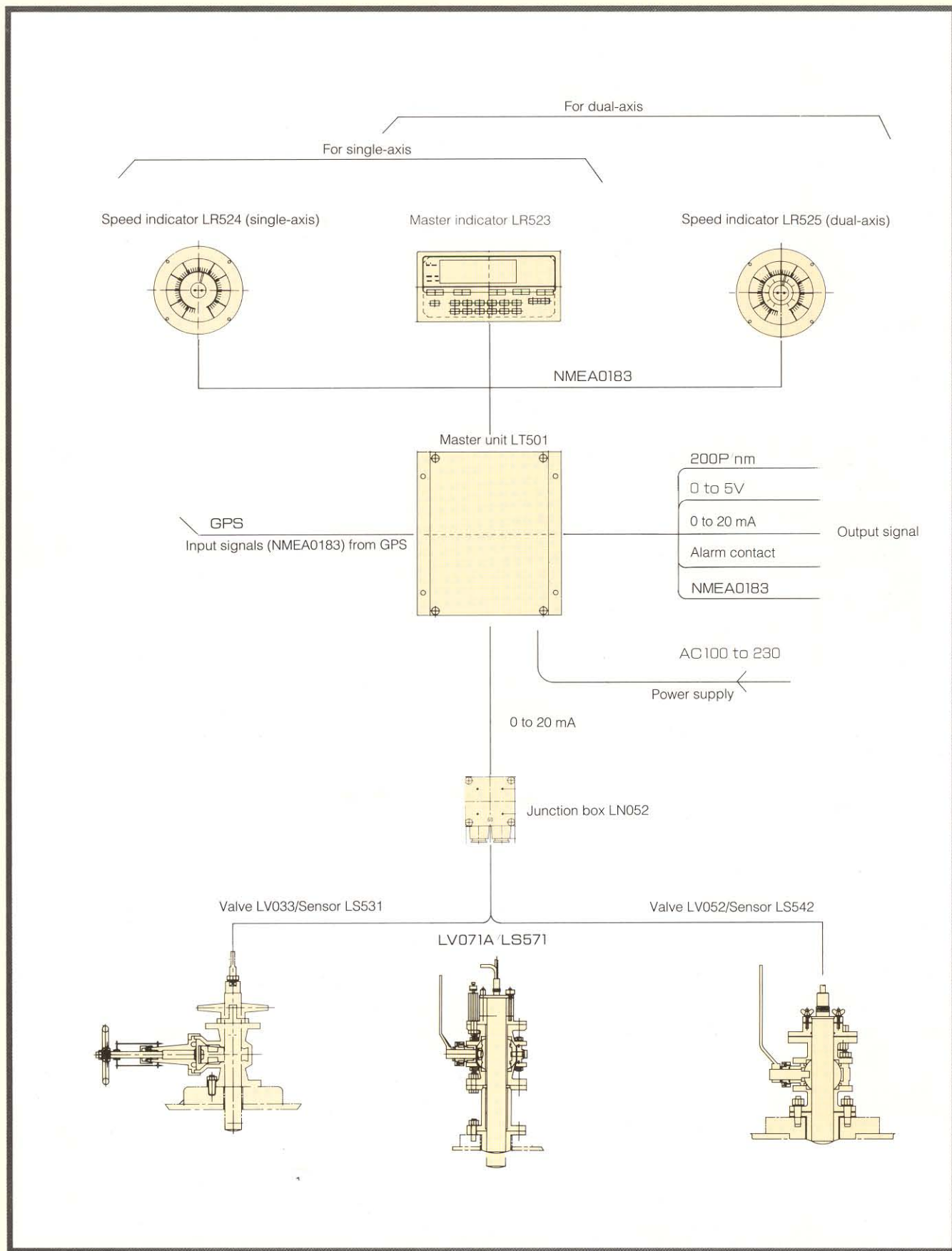
Single-axis (dual-axis)

Valve (LV071A)

Sensor (LS571)



System Configuration



Specifications

Measurement range	Speed	-4 to 20 Kt -5 to 25 Kt -7 to 35 Kt -8 to 40 Kt -10 to 50 Kt -13 to 65 Kt
	Distance	0 to 9999.99 nm
	Direction	0 to 359° (for dual-axis)
Accuracy	Speed	±0.15 Kt (for standard input signal) ±0.25 Kt (-10 to 50 Kt, -13 to 65 Kt)
	Distance	The larger of ±0.05 nm/h or ±1%
	Direction	±2.5° (for dual-axis)
Response	Variable between 10 and 180 sec for 0 to FS input (0 to 90% response)	
Power supply	AC100/220V 50/60Hz	
Power consumption	Approx. 80 VA	
Input signal	NMEA-0183 (for back up signals from external speed sensors such as GPS) 1ch	
Output signal	Speed	Voltage: 0 to 5 V DC or 1 to 5 V DC Current: 0 to 20 mA or 4 to 20 mA 2ch 4ch
	Pulse	200P/nm photo-coupler output, 5.5 V, 5 mA 8ch 200P/nm contact output, 30 V, 1 A, 100 ms ON width 2ch
	Speed alarm	Contact output NC or NO, 30 V DC, 1 A 2ch
	System alarm	Contact output NC or NO, 30 V DC, 1 A 2ch
	Digital signal	NMEA-0183 (longitudinal speed and transverse speed) 2ch
Environment	Ambient temperature	-15 to +55°C (when operating) -20 to +60°C (when not operating)
	Humidity	10 to 95% RH
	Power variation	Voltage: ±10% Frequency: ±6%
	Vibration	5 to 12.5 Hz ±1.6 mm 12.5 to 25 Hz ±0.38 mm 25 to 50 Hz ±0.1 mm
	Withstanding water-pressure	0.5MPa (at bottom valve and sensor)
Standard	JG approved number:3795 DOT and NV applications in progress.	

YOKOGAWA 

Yokogawa Denshikiki Co.,Ltd.

URL : <http://www.yokogawa.co.jp/YDK/>



Caution: Please read the manual before using this product.

Address : 21st Floor, Shinjuku Park Tower.

3-7-1 Nishi-shinjuku, Shinjuku-ku, Tokyo, 163-1054 Japan

International Sales Dept. Phone : (81) 3-5323-5120 FAX : (81) 3-5323-5555

Service Dept. Phone : (81) 3-5323-5132, 5133 FAX : (81) 3-5323-5555

Domestic Sales Dept. Phone : (81) 3-5323-5123 FAX : (81) 3-5323-5555

Osaka branch Phone : (81) 6-6368-7102 FAX : (81) 6-6368-7103

Imabari branch Phone : (81) 898-22-4559 FAX : (81) 898-33-2005

Fukuoka branch Phone : (81) 92-451-3211 FAX : (81) 92-451-3249

POLAR

POLAR DENİZCİLİK VE DENİZ MALZEMELERİ A.Ş.

Güzelyalı Mah. Sahil Yolu Cad. No. 78 Pendik 34903 İstanbul

TELEFON: (0216) 493 55 55 pbx FAKS: (0216) 392 42 26

E-POSTA: info@polarmarine.com WEB: www.polarmarine.com